

29 - 31 May, Hamble



**X-Yachts**

**SOLENT CUP 2026**

## Programme of Events

**SUPPORTED BY:**



Insurance | Risk Management | Consulting

# Friday, 29th May

## **1600–1800:**

Registration with Debbie, Royal Southern Yacht Club, Hamble

## **1800:**

Skipper's Briefing with Race Officer Peter Bateson  
(Location to be confirmed via the Event WhatsApp Group)

## **1830–Close:**

Option to book the Restaurant at the Royal Southern Yacht Club or explore local eateries in Hamble  
(Booking advised – please contact us for recommendations)

# Saturday, 30th May

## **0700–0830:**

Handing out of Lunch Bags  
(to be ordered on the Entry Form)

## **0830:**

Weather Briefing sent out by the Sailing Secretary, via the Event WhatsApp Group

## **1025:**

First Warning Signal  
(Please check for any amendments and specific class start times)

## **After Racing:**

Sponsored Dark & Stormy Drinks Reception at the Royal Southern Yacht Club

## **1900–Close:**

Gala Dinner in the Main Dining Room  
Dress code: Smart Casual

# Sunday, 31st May

## **0700–0830:**

Handing out of Lunch Bags  
(to be ordered on the Entry Form)

## **0830:**

Weather Briefing sent out by the Sailing Secretary, via the Event WhatsApp Group

## **1025:**

First Warning Signal  
(Please check for any amendments and specific class start times)

## **Target Time 1500–1600:**

Prize Giving  
(Location to be confirmed via the Event WhatsApp Group)

29 - 31 May, Hamble



**X-Yachts**

**SOLENT CUP 2026**

# ENTRY FORM 2026

**SUPPORTED BY:**



**dubarry**   
of Ireland



**Gallagher**

Insurance | Risk Management | Consulting



IF PRINTING THIS DOCUMENT, WE RECOMMEND NOT PRINTING THIS PAGE.

## Entry Form:

<b>Boat Name:</b>
<b>Boat Type:</b>
<b>Sail Number:</b>

### Owner Details:

<b>Full Name:</b>
<b>Mobile Number:</b>
<b>Email Address:</b>

### I wish to enter the following class in the Solent Cup 2026:

*(please tick)*

**Pure  
Cruising  
Class**

**Sports  
Class**

**Open  
(non-  
X-Yachts)**

### ***Please tick the following as appropriate***

Entry Fee to the Solent Cup 2026 <b>including</b> : - Race Management and hosting by the Royal Southern Yacht Club		
Member of the X-Yachts Owners Association:		<b>£395</b>
Non-Member of the X-Yachts Owners Association:		<b>£445</b>
Pure Cruising Class and Open Class are open to all models of all sizes with a valid VPRS certificate. Boats are restricted to the use of only one mainsail and one headsail per race. VPRS needed?		<b>£30</b>

## Berthing:

Berthing is charged at members rate for the weekend. Berthing is limited so please book directly with Brian, the Royal Southern Yacht Club Haven Manager at: [maintenance@royal-southern.co.uk](mailto:maintenance@royal-southern.co.uk). Additional berthing can be sourced from Port Hamble Marina – short walk to The Royal Southern Yacht Club: [porthamble@mdlmarinas.co.uk](mailto:porthamble@mdlmarinas.co.uk).

## Dinner:

<b>Saturday evening 30<sup>th</sup> May 3-Course Gala Dinner Ticket (per person):</b>	<b>Qty:</b>	<b>Per Person:</b>
- Dress is Smart Casual - After dinner entertainment / speaker (to be announced) Bar will be available to purchase wine and drinks.		<b>£45</b>

## Lunches:

<b>Packed Lunch Saturday 30<sup>th</sup> May 2026</b>	<b>Qty:</b>	<b>Per Person:</b>
		<b>£8</b>
<b>Packed Lunch Sunday 31<sup>st</sup> May 2026</b>	<b>Qty:</b>	<b>Per Person:</b>
		<b>£8</b>

29 - 31 May, Hamble



**X-Yachts**

**SOLENT CUP 2026**

## Notice of Race

# X-Yachts Solent Cup 2026

**29<sup>th</sup> - 31<sup>st</sup> May**

SUPPORTED BY:



**dubarry**   
of Ireland



**Gallagher**

Insurance | Risk Management | Consulting



For more information visit [www.royal-southern.co.uk](http://www.royal-southern.co.uk) or contact the Sailing Office on either 02380 450 302 or [sailing@royal-southern.co.uk](mailto:sailing@royal-southern.co.uk).

# X-Yachts Solent Cup 2026

## Notice of Race

**Organising Authority:** Royal Southern Yacht Club

---

### 1. RULES

1.1 The event will be governed by the rules as defined in the Racing Rules of Sailing (RRS).

1.2 Boats shall comply with Southampton and Portsmouth Harbour byelaws where applicable, and with all current ABP Southampton Notices to Mariners in force at the time of the event, including those relating to the Southampton Precautionary Area.

1.3 The Open Sports Classes will race under IRC Rules and each boat must have a valid current IRC rating. IRC Rules Parts A, B & C will apply.

1.4 Competitors should note that the OA implements the RYA Racing Charter and they will be expected to sail in compliance with it.

1.5 In the event of a conflict between documents, the Sailing Instructions will prevail. This changes RRS 63.7.

---

### 2. SAILING INSTRUCTIONS

2.1 Sailing Instructions will be made available before the event.

---

### 3. COMMUNICATION

3.1 The Official Noticeboard will be on the following webpage:

<https://scm.royal-southern.co.uk/event/x-yachts-solent-cup-1>

3.2 Boats shall comply with the latest World Sailing Offshore Special Regulations for Category 4 races and shall carry a working VHF radio capable of receiving all standard marine channels, including M1 (37A) and M2.

---

### 4. ELIGIBILITY & ENTRY

4.1 All X-Yachts are eligible to enter.

4.2 **Pure Cruising Class (VPRS)** – open to all models with a valid VPRS certificate. Boats are restricted to one mainsail and one headsail per race.

4.3 **Open Sports Classes (IRC)** – open to all models under IRC. Sail wardrobe

permitted as declared for IRC rating.

4.4 Entries shall be submitted to:

**Debbie Wisley**, X-Yachts (GB) Ltd.

2 Huntsman Road, Hamble Point Marina, Southampton, SO31 4NB

Tel: +44 (0)23 8045 3377

Email: dw@x-yachtsgb.com

4.5 Entry deadline: **Monday 11th May 2026.**

4.6 Entries are not valid until the entry fee has been received.

---

## 5. FEES

Entry Type	XOYA Members	Non-Members*
All Entries	£395	£445

\*Non-member rate includes one year's membership of the X-Yachts Owner's Association.

---

## 6. CREW LIMITATIONS

6.1 IRC 22.4.2 is replaced by:

**"The maximum number of crew while racing shall be the Crew Number shown on her certificate plus two. There is no weight limit."**

---

## 7. ADVERTISING

7.1 Boats may be required to display advertising chosen and supplied by the OA.

---

## 8. NOT USED

---

## 9. SCHEDULE

### Friday 29th May

**1600–1800** Registration – Royal Southern Yacht Club

**1800** Skipper's Briefing

**1830–Close** Free time to book restaurant or explore Hamble

### Saturday 30th May

**0700–0830** Lunch Bag Collection (pre-ordered)  
**0830** Weather Briefing (WhatsApp – informational only)  
**1025** First Warning Signal  
**After Racing** Dark & Stormys Drinks Reception (sponsored)  
**1900–Close** Gala Dinner – Main Dining Room

## **Sunday 31st May**

**0700–0830** Lunch Bag Collection (pre-ordered)  
**0830** Weather Briefing (WhatsApp – informational only)  
**1025** First Warning Signal  
**1500–1600** Prize Giving (target window)

---

## **10. EQUIPMENT INSPECTION**

10.1 Random safety inspections may be carried out. A boat refusing inspection or failing to assist may be disqualified without a hearing. This changes RRS 63.1. Inspections do not reduce the responsibilities of competitors.

---

## **11. NOT USED**

---

## **12. VENUE**

12.1 The racing area will be the Central Solent.

---

## **13. COURSES**

13.1 Courses will be “round the cans” using fixed navigational marks or laid inflatable marks, as detailed in the Sailing Instructions.

---

## **14. PENALTY SYSTEM**

14.1 RRS 44.1 is changed to a **One-Turn Penalty** (one tack and one gybe). A Time Penalty option will be described in the Sailing Instructions.

14.2 Protest penalties may be less than disqualification. This changes RRS 64.2.

---

## **15. SCORING**

15.1 IRC ratings will be used for the Open Sports Classes.

15.2 VPRS ratings will be used for the Pure Cruising and Open Classes.

15.3 Series score = total of all race scores (no discard). One race constitutes a series.

---

## **16. NOT USED**

---

## **17. NOT USED**

---

## **18. BERTHING**

18.1 Limited berthing available in the Prince Philip Yacht Haven (book in advance: haven@royal-southern.co.uk).

18.2 Boats shall berth as directed by the OA.

18.3 No berthing permitted on RAFYC pontoons or alongside vessels berthed there.

---

## **19. HAUL-OUT RESTRICTIONS**

19.1 [DP] Boats shall not be hauled out during the event except with prior written permission of the Race Committee.

---

## **20. DIVING EQUIPMENT & PLASTIC POOLS**

20.1 No underwater breathing apparatus or plastic pools may be used between the preparatory signal of the first race and the end of the event.

20.2 No below-waterline cleaning is permitted during the event.

---

## **21. DATA PROTECTION**

21.1 Personal information will be used to facilitate participation and processed under contract or legitimate interest, depending on rule compliance.

Information may be shared with the RYA, national authorities, and World Sailing as required.

Event results and hearing outcomes may be published.

---

## **22. RISK STATEMENT**

## **22. 22.1 RISK STATEMENT**

RRS 3 states: 'The responsibility for a boat's decision to participate in a race or to continue racing is hers alone.'

Sailing is by its nature an unpredictable sport and therefore inherently involves an element of risk. By taking part in the event, each competitor agrees and acknowledges that:

- a. They are aware of the inherent element of risk involved in the sport and accept responsibility for the exposure of themselves, their crew and their boat to such inherent risk whilst taking part in the event;
- b. They are responsible for the safety of themselves, their crew, their boat and their other property whether afloat or ashore;
- c. They accept responsibility for any injury, damage or loss to the extent caused by their own actions or omissions;
- d. Their boat is in good order, equipped to sail in the event and they are fit to participate;
- e. The provision of a race management team, patrol boats and other officials and volunteers by the event organizer does not relieve them of their own responsibilities;
- f. The provision of patrol boat cover, if any, is limited to such assistance, particularly in extreme weather conditions, as can be practically provided in the circumstances;
- g. It is their responsibility to familiarise themselves with any risks, regulations and/or bye-laws specific to sailing on the Solent including, but not limited to, to MPZ referred to in NoR 1;
- h. They are responsible for ensuring that their boat is equipped and seaworthy so as to be able to face extremes of the weather; that there is a crew sufficient in number, experience and fitness to withstand such weather; and that the safety equipment is properly maintained, stowed and in date and is familiar to the crew

---

## **23. SAFETY – COMMERCIAL SHIPPING**

23.1 Boats shall not impede commercial shipping in the Southampton Precautionary Area. Failure to comply may result in protest.

---

## **24. INSURANCE**

24.1 Each boat shall hold valid third-party liability insurance of at least **£3,000,000 per incident**.

---

## **25. PRIZES**

25.1 Prizes will be awarded to the Pure Cruising and Open Sports Classes.  
25.2 The X-Yachts Solent Cup will be awarded on merit by X-Yachts (GB) Ltd. in consultation with the Royal Southern Yacht Club.

---

## **26. FURTHER INFORMATION**

### **Sailing Office**

Royal Southern Yacht Club, Rope Walk, Hamble, Hampshire, SO31 4HB

Tel: 02380 450 302

Email: [sailing@royal-southern.co.uk](mailto:sailing@royal-southern.co.uk)

Website: [www.royal-southern.co.uk](http://www.royal-southern.co.uk)

---

# ROYAL SOUTHERN YACHT CLUB



ROYAL SOUTHERN  
— YACHT CLUB —

29 - 31 May, Hamble



***X-Yachts***<sup>®</sup>

**SOLENT CUP 2026**

## Sailing Instructions

SUPPORTED BY:



**dubarry**   
of Ireland



**Gallagher**

Insurance | Risk Management | Consulting



# Sailing Instructions

## 1. RULES

1.1 The event will be governed by the rules as defined in the Racing Rules of Sailing (RRS).

## 2. CHANGES TO SAILING INSTRUCTIONS

2.1 Any change to the Sailing Instructions (SIs) will be posted by 0830 on the day it will take effect, except that any change to the schedule of races will be posted by 2000 on the day before it will take effect.

## 3. COMMUNICATIONS WITH COMPETITORS

3.1 Notices to competitors will be displayed on the [Official Notice Board \(ONB\)](#)

3.2 The Race Office is located in the Royal Southern Yacht Club Sailing Office.

3.3 On the water, the Race Committee intends to monitor and communicate with competitors on VHF channel 72. If that is blocked or too busy, the RC may display flag "R" (drawing attention to it with one sound signal) and change to channel 08. The RC's callsign is Royal Southern Race Control.

3.4 Messages to competitors and the organising authority may be sent via the Competitors' WhatsApp group. The WhatsApp group may be joined [using this link](#)

## 4.0 CODE OF CONDUCT

4.1 The Organising Authority implements the RYA Racing Charter and competitors are expected to sail in compliance with it.

4.2 Competitors and support persons shall comply with reasonable requests from Race Officials and representatives of the Organising Authority. For the purposes of this SI, this includes all Royal Southern Yacht Club staff.

## 5. SIGNALS MADE ASHORE

5.1 Signals made ashore will be displayed at the Royal Southern YC flagstaff. When flag AP is displayed ashore, RRS Race Signals are changed so that '1 minute' is replaced by 'not less than 60 minutes.'

## 6. SCHEDULE OF RACES

6.1 (a) Five races are scheduled for the Open Sports Classes, with three races planned for Saturday and two races for Sunday.

(b) Three races are scheduled for the Pure Cruising Class, with two races planned for Saturday and one Pursuit Race for Sunday.

(c) If the scheduled Saturday races are not completed, an extra race may be run on Sunday for one or more classes.

### 6.2 Saturday arrangements:

For the first race, the intended starting order and times are:

Class	Class Flag	Warning Signal	Prep. Signal	Prep. Down	Start Time
Open Sports Class	Numeral 2	1025	1026	1029	1030
Pure Cruising Class	Numeral 4	1035	1036	1039	1040

7.5 For subsequent races, boats should return to the main committee boat immediately after finishing the previous race and listen on VHF radio (see SI 3.3). Classes will be started when ready and so the order may change.

### 7.6 Sunday arrangements:

(a) for the Open Sports Class: the same as for Saturday, as above.

(b) for the Pure Cruising Class: a Pursuit Race - see **Appendix A below**.

## 7. CLASS FLAGS

1.1 Boats are requested to display their class flag prominently in the aft part of the boat at least 1.5 metres above deck level. Boats not in possession of the class flag should display a burgee in the same place to indicate that they are racing.

## 8. RACING AREA

8.1 Racing will be in the Central Solent or Southampton Water.

- 8.2 The start location for each race will be advised by VHF radio from at least one hour before the first scheduled warning signal and may be published on the WhatsApp group.
- 8.3 The committee boat may change location after starting a race; its location and the order and times of subsequent race starts will be advised by VHF radio.

## **9. COURSES**

- 9.1 Courses will use marks listed in the Royal Southern Solent Area Mark Codes 2026 list in the Appendix.
- 9.2 The course for each class will be advised by VHF radio at the warning signal for that class and repeated after the preparatory signal.

## **10. MARKS**

- 10.1 The description and colour of any laid inflatable mark being used will be advised by VHF.

## **11. Not used**

## **12. THE START**

- 12.1 To alert boats that a race start sequence will begin soon, the orange flag will be displayed with one sound as an "attention" signal five minutes before the first warning signal.
- 12.2 The starting line will be between a staff displaying an orange flag on the main committee boat and the course side of an inflatable outer distance mark (ODM), colour to be advised with the course.
- 12.3 An inner distance mark (IDM) may be laid near the main committee boat. No part of a boat's hull shall cross a line between the IDM and the main committee boat during the last minute before her starting signal, or after the start before starting and clearing the line. A boat infringing this rule may exonerate herself by sailing across an extension of the starting line so that her hull is completely on the pre-start side before she starts.
- 12.4 Boats whose class warning signal has not been made shall avoid the starting area during the starting sequence for other classes.

## **13. CHANGE OF THE NEXT LEG OF THE COURSE and SHORTENING OR ABANDONING AFTER THE START**

- 13.1 For windward-leeward courses using inflatable marks, the next leg of the course may be changed by moving the original mark by up to 0.25 NM from its original position and such a change may not be signalled but will be communicated by VHF. This changes RRS 33.
- 13.2 A committee boat (which may be a RIB) may be on station near to any mark, making repetitive sound signals and displaying flag "F". Boats shall round that mark and then proceed directly to the Finishing Line. This changes RRS 33 and Race Signals. The RC may announce such changes by radio.
- 13.3 Changing RRS35, RRS A5.2 and RRS A9:  
(a) In addition to RRS 32, the Race Committee may score boats in the order, corrected on handicap if appropriate, that they massed through the last gate or mark at which the Race Committee are able to establish a finishing order. Such a line becomes the finishing line for those boats.  
(b) The Race Committee may signal this by the display of flags "S" over "3rd Substitute" and by announcement via VHF.

## **14. THE FINISH**

- 14.1 The finishing line is between the last mark of the course and a staff displaying a blue flag on the nearby race committee boat.
- 14.2 Each boat should record its own finishing time and (if possible) the sail number or name of the boats ahead and astern; and give this information to the Race Committee if requested.

## **15. PENALTY SYSTEM**

- 15.1 The first two sentences of RRS 44.1 are changed to: "A boat may take a One-Turn Penalty when she may have broken one or more rules of Part 2 or RRS 31 in an incident while racing."
- 15.2 Instead of a One-Turn Penalty, a boat may accept a Scoring Penalty in accordance with RRS 44.3.
- 15.3 Appendix T1 shall apply.

## **16. TIME LIMITS**

- 16.1 There are no specific time limits.
- 16.2 The Finishing Window is the time for boats to finish after the first boat sails the course and finishes.

16.3 A boat failing to finish within the Finishing Window, and not subsequently retiring, penalized or given redress, may be scored Time Limit Expired (TLE) without a hearing. See SI 18 for scoring.

16.4 Unless otherwise notified for a class when announcing the course, the Finishing Window is 45 minutes.

## **17. HEARING REQUESTS**

17.1 Boats intending to protest shall report this to the main committee boat as soon as possible after the end of the race in question.

17.2 The protest time limit is 60 minutes after the last boat in the class finishes the last race of the day. This time limit be posted on the ONB.

17.3 Hearing requests shall be submitted [via this online, mobile-friendly form](#)

17.4 Notice of protests by the RC or the Protest Committee (PC) will be posted on the ONB. T

17.5 A list of hearings will be displayed on the ONB as soon as possible after the protest time limit along with time and place of the hearings. This changes RRS 63.2.

17.6 Hearings will be held at the R Sn YC as soon as possible after racing; or may be 'virtual' if the PC so decide, in which case the parties will be notified of the arrangements. A party to a hearing may request a 'virtual' hearing and is advised to make any such request as soon as possible. The PC has complete discretion whether to hold hearings virtually or in person.

17.7 A boat penalised under SI 19.4 (a) is entitled to a hearing on request.

17.8 Penalties arising from protests are at the discretion of the PC. If the PC considers that points for retiring from a race make an insufficient penalty in the circumstances, it may impose a higher penalty. This changes RRS 60.5(c).

## **18. SCORING**

18.1 The Low Point System of RRS Appendix A will apply. A boat's series score will be the total of her race scores with no discard.

18.2 The score for Time Limit Expired (TLE) under SI 16 will be equal to the number of finishers plus 1. If more than one boat is to be scored TLE they will each receive the same score.

## **19. SAFETY REGULATIONS**

19.1 No anchor shall be carried forward of the stem or with any part of it outboard, except when anchoring.

19.2 Retirement. A boat that retires from a race or does not complete the race for any reason shall notify the Race Committee before leaving the race area, or by notifying the Race Office no later than immediately after arriving ashore.

19.3 If Flag "Y" is displayed, lifejackets/personal buoyancy shall be clearly visible to other boats.

19.4 **Shipping:**

(A) Boats shall comply with the Southampton Harbour Bye-laws. In particular, attention is drawn to ABP Southampton Notice to Mariners No. 5 of 2026 concerning the Thorn Channel Precautionary Area. Copies are available here:

[sou-Intm-2026-005-precautionary-area-thorn-channel.pdf](#)

a) to avoid commercial shipping that is under way, a boat may use her engine, or any other means of propulsion, without retiring. This shall be reported to the Race Committee at the finish and with full details to the Sailing Office before the protest time limit expires, in writing if requested. The Race Committee may refer the matter to the Protest Committee which may impose a penalty without a hearing if an advantage has been gained. This affects RRS 42.3(i) and changes 60.5(c).

(b) Boats should have an alternative means of propulsion ready for immediate use if there is any possibility of a close quarters situation developing between them and a commercial vessel.

## **20 - 22. Not used**

## **23. OFFICIAL VESSELS**

23.1 The main committee boat will display a flag with RSrNYC lettering on it.

## **24-28. NOT USED**

## **29. PRIZES**

29.1 The first three boats in each class will each be awarded a glassware prize.

- 29.2 The X-Yachts Solent Cup will be awarded on merit by X-Yachts GB in consultation with the Royal Southern Yacht Club.
- 29.3 Other prizes will be awarded at the discretion of X-Yachts GB in consultation with the Royal Southern Yacht Club.

### **30. RISK STATEMENT**

- 30.1 See Notice of Race paragraph 22.

### **31. INSURANCE**

- 31.1 See Notice of Race paragraph 24.

### **32 DATA PROTECTION and IMAGERY**

- 32.1 The personal information you provide to the Organising Authority will be used to facilitate your participation in the event. If you have agreed to be bound by the Racing Rules of Sailing and the other rules that govern the event (the rules), the legal basis for processing that personal information is contract. If you are not bound by the rules, the legal basis for processing that personal information legitimate interest. Your personal information will be stored and used in accordance with the Organising Authority's privacy policy. When required by the rules, personal information may be shared with the RYA, your national authority and/or World Sailing. The results of the event and the outcome of any hearing may be published. Competitors' contact details may be given to other competitors with a valid need (e.g. parties to a protest) or to any relevant Harbour Authority requiring such information.
- 32.2 By taking part in the event, competitors automatically grant the Organising Authority, sponsors and supporters, without payment, the right in perpetuity to make, use and show any motion pictures, still pictures and live, taped or filmed television of or relating to the event.

### **APPENDIX A - SUNDAY PURSUIT RACE for the Pure Cruising Class**

- 8.1 Each boat will be allocated her own start time, which will be displayed on the official notice board before 1900 on Saturday 30<sup>th</sup> May 2026. Two or more boats may start at the same time. Competitors must note their own start time.
- 8.2 A normal start sequence will be given for the first boat to start, beginning with a Warning Signal 5 minutes before her start. At that boat's start time, the class flag will be dipped and then re-displayed until the time that the last boat is due to start.
- 8.3 Thereafter, VHF radio will be used to give each boat a 1-minute warning and a starting count-down. The class flag will be dipped at each boat's start time. See SI 3.3 for radio channels. These radio transmissions will be on low power and normally only receivable near to the start line. It is the responsibility of each boat to start at or after the correct time regardless of any error or omission in the radio calls. A sound signal will be given at the time each boat is due to start.
- 8.4 If there is a postponement (flag AP) before the time for the first boat to start, all boats will start later than on the original list of times. At the end of the postponement (when flag AP is lowered) the committee boat will display a green flag to indicate that there has been a postponement and will keep the green flag displayed until the time that the last boat is due to start. The revised start time for each boat will be advised by radio.
- 8.5 This changes RRS 26 and Race Signals.
- 8.6 A boat may use her engine until 2 minutes before her start time.
- 8.7 If a boat crosses the start line prematurely: immediately after the boat's start time, the RC will make an extra sound signal, display code flag X for about 30 seconds, and announce by radio that she was OCS. She may return and re-start correctly at or after her allocated start time. Otherwise, she will be scored OCS. This changes RRS 29.1.
- 8.8 The committee boat should be in position at the finish to record finishing order and times. However if the committee boat is delayed (e.g. whilst running racing for another class) then each boat shall record its own finish time and the name and/or sail number of the boats immediately ahead and immediately astern, and give this information to the RC as soon as possible, by VHF radio or telephone.

### **APPENDIX B:**

Royal Southern YC Solent Mark Codes 2026

Roberts Charts Central Solent Chart. Note that the chart does not show the "standard positions for inflatable marks" with codes 8L to 8Y - however these are fully detailed in the Mark Codes list.

For more information visit [www.royal-southern.co.uk](http://www.royal-southern.co.uk)  
or contact the Sailing Office 023 8045 0302 or [sailing@royal-southern.co.uk](mailto:sailing@royal-southern.co.uk)



**ROYAL SOUTHERN YACHT CLUB**

Rope Walk, Hamble, Southampton, SO31 4HB

Tel: +44(0)23 8045 0302

E-mail: [sailing@royal-southern.co.uk](mailto:sailing@royal-southern.co.uk) Website: [www.royal-southern.co.uk](http://www.royal-southern.co.uk)

**X-YACHTS (GB) LTD**

2 Huntsman Road, Hamble Point Marina Hamble SO31 4NB

Tel: +44(0)23 8045 3377

E-mail: [info@x-yachtsgb.com](mailto:info@x-yachtsgb.com) Website: [www.x-yachtsgb.com](http://www.x-yachtsgb.com)

**ROYAL SOUTHERN SOLENT AREA MARKS 2026**

**Zone 1 Western Approaches**

ID	Name	Colour	Lat N	Long W
1A	Peveril Ledge	R	50 36.41	01 56.10
1B	Poole Bar No 1	G	50 39.29	01 55.14
1C	Stoneways Marine	Y	50 40.31	01 54.02
1D	The Rig Shop	Y	50 41.08	01 54.26
1E	Ledge Buoy	Y	50 41.50	01 41.60
1F	Needles Fairway	RW	50 38.24	01 38.98
1G	South West Shingles	R	50 39.29	01 37.52
1H	Bridge	YBY	50 39.63	01 36.88
1J	Shingles Elbow	R	50 40.37	01 36.05
1K	North Head	G	50 42.69	01 35.52
1L	Needles Lighthouse	RW	50 39.73	01 35.50
1M	Warden	G	50 41.48	01 33.55
1N	North East Shingles	BYB	50 41.96	01 33.41
11	East Hook	R	50 40.58	01 55.23
12	Mid Bay Buoy	Y	50 42.60	01 40.80
13	Parkstone YC	Y	50 39.61	01 55.20

**Zone 2 West Solent**

2A	Hill Robinson	Y	50 42.77	01 32.43
2B	Dunford Construction	Y	50 43.38	01 31.54
2C	Colten	Y	50 43.83	01 30.86
2D	Lymington Yacht Haven	Y	50 44.24	01 29.90
2E	Circle Marine Insurance	Y	50 44.49	01 29.32
2F	Berthon	Y	50 44.20	01 29.22
2G	Bridgeworks WAN Acceleration	Y	50 44.79	01 28.47
2H	Draycott Chartered Surveyors	Y	50 44.30	01 28.16
2J	Zwerver	Y	50 45.11	01 27.34
2K	Greenings Fintech	Y	50 44.83	01 26.09
2L	Royal Lymington YC	Y	50 43.14	01 31.95
2R	Powder Byrne	Y	50 45.43	01 25.89
2T	Lymington Bank	R	50 43.10	01 30.85
2U	Tuakana Construction	Y	50 43.67	01 29.50
2X	Solent Bank	R	50 44.23	01 27.37
20	Sconce	BY	50 42.53	01 31.43
21	Black Rock	G	50 42.57	01 30.59
22	Raymond James Charles Stanley	Y	50 42.86	01 29.40
24	BDM CX	Y	50 42.86	01 28.42
25	Contessa 26 Association	Y	50 43.15	01 27.49
26	Hamstead Ledge	G	50 43.87	01 26.18
27	Adam Harding-Domeney	Y	50 42.97	01 28.16
28	Harwoods	Y	50 42.73	01 28.69

**Zone 3 Mid Solent (W)**

3A	West Lepe	R	50 45.24	01 24.09
3B	Newtown East	Y	50 44.36	01 23.80
3C	Basher	Y	50 45.64	01 23.12
3D	Salt Mead	G	50 44.51	01 23.04
3E	The Boss	Y	50 46.13	01 22.19
3F	Markby	Y	50 44.72	01 21.95
3G	Cowes Week 200	Y	50 46.58	01 21.46
3H	East Lepe	R	50 45.93	01 21.07
3K	Lepe Spit	YB	50 46.78	01 20.64
3L	Gurnard Ledge	G	50 45.51	01 20.59
3N	MDL Marinas	Y	50 47.07	01 19.88
3P	Cowes Yacht Haven	Y	50 45.68	01 19.98
3Q	Polly's Challenge	Y	50 45.97	01 19.45
3R	North East Gurnard #	R	50 47.06	01 19.42
3S	SCRA.ORG.UK	Y	50 47.81	01 19.25
3T	CHS	Y	50 46.10	01 18.87
3U	Gurnard	BY	50 46.22	01 18.84
3V	West Bramble #	YBY	50 47.20	01 18.65
3W	Williams Shipping	Y	50 47.20	01 18.55
3X	Island Sailing Club	Y	50 46.10	01 18.43

Zone 3 continued in next column

**Zone 3 Mid Solent (W) Continued**

ID	Name	Colour	Lat N	Long W
3Y	West Knoll	Y	50 47.43	01 17.84
3Z	Trinity House Buoy	Y	50 46.31	01 17.75
30	RORC	Y	50 47.12	01 17.72
31	South Bramble	G	50 46.98	01 17.72
33	Prince Consort	BY	50 46.41	01 17.56
34	Cowes Corinthian	Y	50 46.15	01 17.20
39	Snowden	Y	50 46.20	01 17.75

**Zone 4 Mid Solent (E)**

4A	Reach #	G	50 49.05	01 17.65
4B	Coronation	Y	50 49.55	01 17.62
4C	Fumesy	Y	50 49.21	01 17.46
4D	Calshot #	BY	50 48.44	01 17.03
4E	Andy Cassell	Y	50 47.67	01 17.00
4F	Royal Thames	Y	50 47.20	01 17.00
4G	Chieftain Training	Y	50 49.45	01 16.91
4H	East Knoll	G	50 47.96	01 16.83
4J	hamblewinterseries.com	Y	50 48.63	01 16.56
4K	Royal London	Y	50 46.15	01 16.65
4L	Jane	Y	50 49.03	01 16.49
4M	Hill Head	R	50 48.07	01 16.00
4N	Ben F Wood	Y	50 47.27	01 15.90
4P	West Ryde Middle	YBY	50 46.48	01 15.79
4Q	John Fisher	Y	50 48.46	01 15.72
4R	Darling Buoy	Y	50 49.18	01 15.71
4S	Royal Southern	Y	50 48.86	01 15.43
4T	Norris #	R	50 45.97	01 15.51
4U	Goodall Roofing	Y	50 46.43	01 15.09
4V	Hamble Yacht Services	Y	50 48.13	01 14.64
4W	Ancasta	Y	50 47.33	01 14.59
4X	Colette	Y	50 45.53	01 14.39
4Y	North Ryde Middle	R	50 46.61	01 14.31
4Z	South Ryde Middle	G	50 46.13	01 14.16
40	Haven Knox Johnston Specialist	Y	50 47.66	01 13.65
41	East Bramble	BYB	50 47.23	01 13.64
42	Peel Bank	R	50 45.49	01 13.35
43	Little Ship Club	Y	50 46.16	01 13.09
44	Royal Yacht Squadron	Y	50 47.31	01 12.10
45	South East Ryde Middle	YB	50 45.93	01 12.10
46	North East Ryde Middle	R	50 46.21	01 11.88
47	Contessa 32 Class	Y	50 47.70	01 15.25
48	Paul Heys	Y	50 48.21	01 16.68
49	250th Anniversary	Y	50 46.40	01 13.58

**Zone 5 East Solent**

5A	Quarr	Y	50 45.03	01 11.89
5B	Mother Bank	R	50 45.49	01 11.21
5C	Browndown	G	50 46.57	01 10.95
5D	Kemps Quay	Y	50 45.18	01 09.65
5E	Stokes Bay East	Y	50 46.26	01 08.76
5F	North Sturbridge	BY	50 45.33	01 08.23
5G	Baker Trayte Marine	Y	50 46.42	01 07.90
5H	Portsmouth SC	Y	50 46.82	01 07.35
5J	KB Dry Stack	Y	50 46.61	01 07.29
5K	Naomi House & Jacksplace	Y	50 47.08	01 06.78
5M	Gleeds	Y	50 46.11	01 06.52
5P	www.victoryclass.org.uk	Y	50 46.36	01 06.08
5Q	Outer Spit *	YB	50 45.44	01 05.46
50	Fairhall West @	Y	50 46.81	01 10.40
51	SBSC Central @	Y	50 46.60	01 09.85

\* SQ Outer Spit may only be used if given prior consent by KHM, which must be sought in weekday office hours

@ Sundays: SBSC only except Cowes Week

See other notes on next page

## ROYAL SOUTHERN SOLENT AREA MARKS 2026

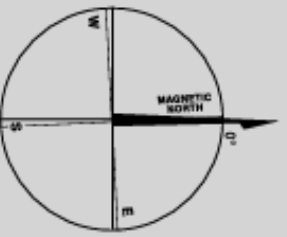
Zone 6 Eastern Approaches					Zone 8 Local Marks and Positions				
ID	Name	Colour	Lat N	Long W	ID	Name	Colour	Lat N	Long W
6A	No Man's Land Fort	B	50 44.40	01 05.70	8A				
6B	Horse Sand Fort	B	50 45.01	01 04.34	8B				
6C	Warner	R	50 43.87	01 03.99	8C				
6D	Horse Elbow	G	50 44.26	01 03.88	8D				
6E	West Princessa	YBY	50 40.16	01 03.65	8E				
6F	Bembridge Ledge Buoy	BYB	50 41.15	01 02.81	8F				
6G	St Helens Buoy	R	50 43.36	01 02.41	8G				
6H	Dean Elbow	G	50 43.69	01 01.88	8H				
6J	Nab East	R	50 42.86	01 00.80	8J				
6K	Horse Tail	G	50 43.23	01 00.23	8K				
6L	Winner	YB	50 45.10	01 00.10					
6M	Nab End	R	50 42.63	00 59.49					
6N	Dean Tail	G	50 42.99	00 59.17					
6P	New Grounds	BYB	50 41.84	00 58.49					
6R	Nab Tower	B	50 40.08	00 57.15					
6S	Outer Nab No 2	BYB	50 38.43	00 57.70					
Zone 7 Southampton Water					<b>8L to 8Y are standard positions for inflatable marks. The buoy will be described, e.g. "black inflatable."</b>				
7A	Gymp	R	50 53.07	01 24.16	8L	0.2M SSE of 4D Calshot N Cardinal		50 48.28	01 16.90
7B	Hythe Knock	R	50 52.83	01 23.81	8M	0.4M E of 4F Royal Thames		50 47.22	01 16.46
7C	No 1 Swinging	G	50 53.00	01 23.44	8P	0.4M W of 4W Ancasta		50 47.30	01 15.25
7D	Weston Shelf	G	50 52.71	01 23.26	8Q	0.4M SE of 4Q John Fisher		50 48.28	01 15.21
7H	Moorhead	G	50 52.55	01 22.90	8R	0.3M SE of 4S Royal Southern		50 48.64	01 15.00
7J	Deans Elbow	R	50 52.20	01 22.85	8S	0.4M SE of 4T Norris		50 45.72	01 14.95
7K	NW Netley	G	50 52.31	01 22.73	8T	0.3M SSW of 4Y North Ryde Middle		50 46.33	01 14.50
7L	Hovercraft 4	Y	50 52.66	01 22.42	8U	0.4M SE of 4V Hamble Yacht Servs		50 47.90	01 14.20
7N	SWSA/HSC	Y	50 51.76	01 22.28	8V	0.5M ENE of 4V Hamble Yacht Servs		50 48.28	01 13.98
7P	Hovercraft 3	Y	50 52.43	01 22.01	8X	0.5M WNW of 44 Royal Yacht Squadn		50 47.47	01 12.90
7Q	Netley	G	50 52.03	01 21.81	8Y	0.5M NNW of 5C Browndown		50 47.00	01 11.30
7R	Lains Lake	R	50 51.59	01 21.65	8Z				
7S	Deans Lake	R	50 51.40	01 21.59	80				
7T	Hovercraft 2	Y	50 52.21	01 21.58	81				
7U	Hound	G	50 51.68	01 21.52	82				
7V	Hovercraft 1	Y	50 51.99	01 21.16	83				
7W	After Barn	G	50 51.53	01 20.82	84				
7Y	Cadland	R	50 51.02	01 20.54	85				
7Z	Greenland	G	50 51.11	01 20.38	86				
70	Warsash Sailing Club	Y	50 50.61	01 19.24	87				
72	Hamble Point	YB	50 50.15	01 18.66	88				
73	Bald Head	G	50 49.80	01 18.07					
74	William	Y	50 49.66	01 17.59					
76	Test	R	50 52.59	01 23.45					
77	Fawley Deep	G	50 50.42	01 19.19					
78	Hook #	G	50 49.52	01 18.30					
<p># Only used for passing and keeping boats out of channel, not for ordinary rounding. Use of other main channel marks should be minimised</p> <p>Most yellow race marks are seasonal March-November</p> <p>Mark codes are mainly in order by longitude from west to east, except Zone 2 is split into Mainland, Middle, and Island Side. Marks added to the list since 2010 may be at the end of their Zones. "Missing" codes are spares.</p>					<p><b>Zone 9 Laid Inflatable Marks</b></p> <p>9A Windward Laid Mark</p> <p>9B Windward Spreader Mark</p> <p>9C Leeward Laid Mark</p> <p>9D Leeward Spreader Mark</p> <p>9E Leeward Gate Above Start Line</p> <p>9F Leeward Gate Below Start Line</p> <p>9G Wing Mark</p> <p>9H Outer Distance Mark</p> <p>9J Finish Mark</p> <p>9K Far Windward Mark</p> <p>9L Far Windward Spreader</p> <p>9M Near Windward Mark</p> <p>9N Near Windward Spreader</p> <p>9P</p> <p>9Q</p> <p>9R</p> <p>9S</p> <p>9T</p> <p>9U</p> <p>9V</p> <p>9W</p> <p>9X</p> <p>9Y</p> <p>9Z</p>				
See other notes on previous page					E&OE R Sm YC Solent Area Marks 23 February 2026				

ZONE 3

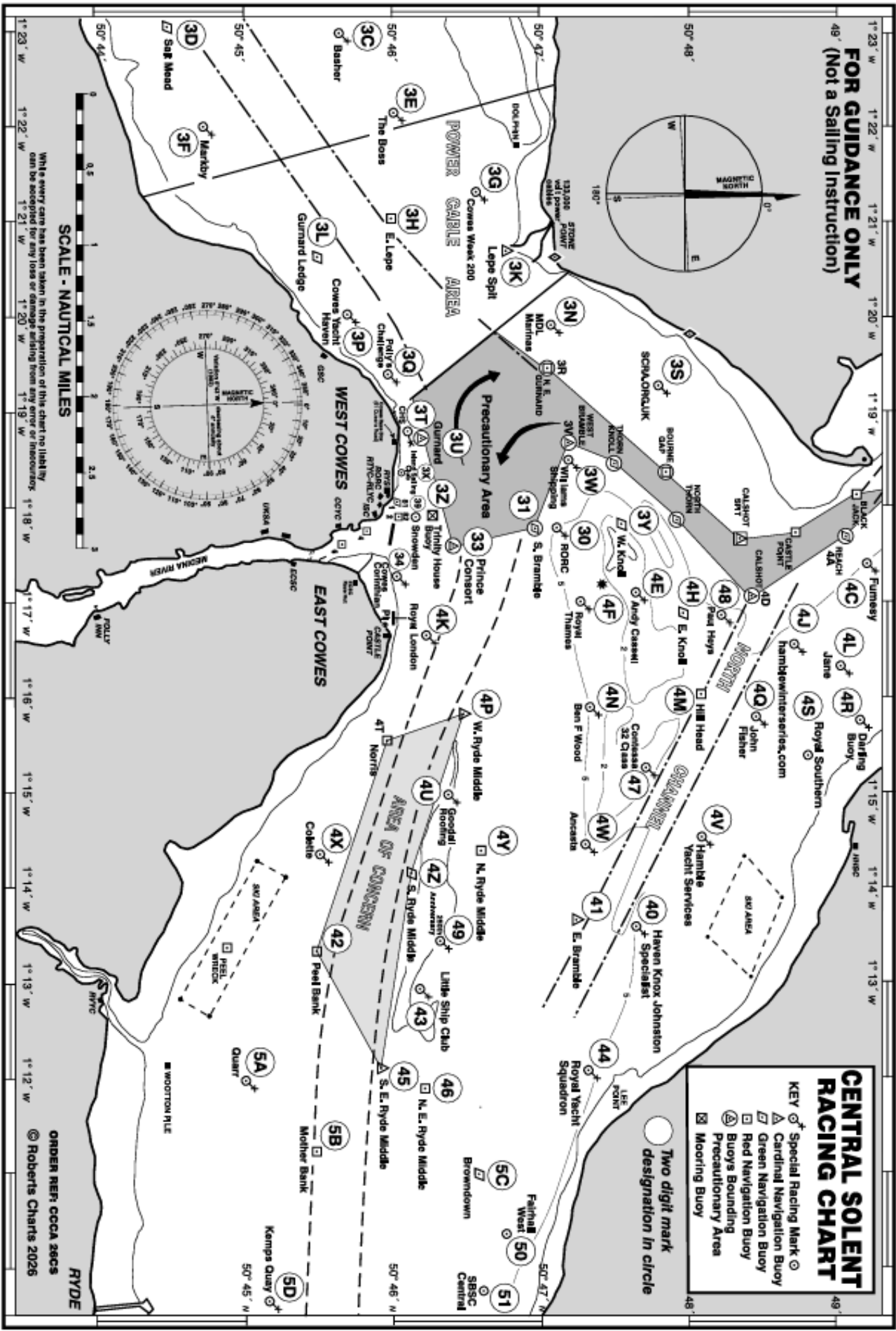
ZONE 4

ZONE 5

**FOR GUIDANCE ONLY**  
(Not a Sailing Instruction)



- CENTRAL SOLENT RACING CHART**
- KEY**
- ⊙ Special Racing Mark
  - ⊕ Cardinal Navigation Buoy
  - ⊖ Green Navigation Buoy
  - ⊕ Red Navigation Buoy
  - ⊖ Buoy Bounding
  - ⊕ Precautionary Area
  - ⊖ Mooring Buoy
- Two digit mark  
designations in circle



SCALE - NAUTICAL MILES

While every care has been taken in the preparation of this chart no liability can be accepted for any loss or damage arising from any error or misreading.

ORDER REF: CCCA 26CS  
© Roberts Charts 2026