

**X4<sup>9</sup>** MK II



**PRODUCT CATALOGUE**  
**X-YACHTS X4.9 MKII**

## A STYLISH HYBRID OF PURE PERFORMANCE AND ULTIMATE FAMILY CRUISING

The X range is designed to meet the demands of sailors who want to enjoy sailing in a wide variety of conditions, as well as have all the luxury you would expect from the clean, timeless Danish style that is synonymous with X-Yachts.

The first X4<sup>3</sup> was launched in the summer of 2016, representing exceptional sailing abilities and spacious airy interior in a luxury style. It was popular from the very beginning with its functional design, working both at sea as well as in harbours. With the success of the X4<sup>3</sup>, it made perfect sense to continue with the X4<sup>9</sup> and the X4<sup>6</sup>, both launched in 2018. The X4<sup>0</sup> – Boat Of The Year award winner 2020 – was developed and launched in 2019, and in 2021 came the flagship X5<sup>6</sup>, selling three times the expected numbers already in the first year. In 2022 X4<sup>3</sup> MkII was introduced and by 2025 already 70+ units sold.

In the spring of 2024, the successful X4<sup>9</sup> MkII was launched in an updated version with many functional, design and comfort feature improvements.



X4<sup>0</sup>

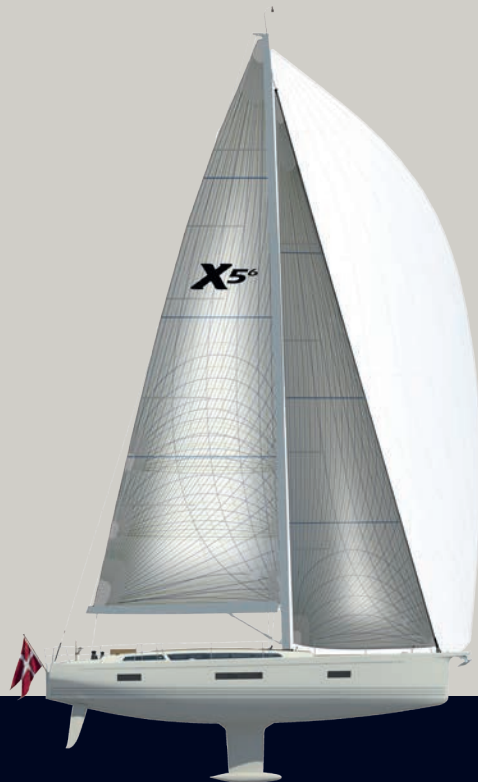
X4<sup>3</sup> MKII

X4<sup>6</sup>

WHAT IS PURE X?  
THE BEST OF BOTH WORLDS



X4<sup>9</sup> MKII



X5<sup>6</sup>

# UPDATED

X-Yachts introduces an updated X4<sup>9</sup> MkII with a lot of improvements. It can be described as a smaller version of the X5<sup>6</sup>, but the new design has been taken further than that in a continuous effort to evolve and improve.





**X4<sup>9</sup>** MK II

## **NO COMPROMISE**

X-Yachts introduces a X4<sup>9</sup> MkII with a lot of improvements. A new look with an updated hull, new rudder, lower weight, more luxury in the cabin and better performance too.

The Pure X range is a true embodiment of the technology and design that sets X-Yachts apart from the competition. Passion driven, X-Yachts has always designed and produced yachts that deliver superior sailing pleasure, and the updated X4<sup>9</sup> MkII is another stunning example, leaving no compromise in appearance and performance.



## NEW S-BOWSPRIT

The characteristic S-bow first introduced with the X5<sup>6</sup>, allows for a longer integrated carbon bowsprit, and as a standard feature, also accommodates an even better integrated stainless steel anchor arm.

On the longer bowsprit, larger and freer flying gennakers ensure better downwind performance.

## LARGER HULL WINDOWS

The visual styling of the portlights has been updated, and the sizes have been increased, now enabling 50 % more natural light into the cabins.

# X4<sup>9</sup> MK II



## RE-ENGINEERED HULL & DECK

New hull and deck structural engineering has reduced the total weight and lowered the center of gravity. Combined with larger downwind sail area, the X4<sup>9</sup> MkII provides even better overall performance than its predecessor.

## REDESIGNED TRANSOM & COCKPIT DESIGN

The X4<sup>9</sup> MkII design also improves helming position both seated and standing due to added coaming and larger, wider foot support as known from the X5<sup>6</sup>

It also gives easier sail handling through optimized positioning of winches, and better comfort through longer cockpit benches.

The longer cockpit benches give more comfortable seating and room for relaxed sun bathing.

The cockpit opening into the transom has been redesigned in the direction of a more open and sportier look. Also making it a more welcoming area when moored stern first.



## REPOSITIONED WINCH LAYOUT

Ease of control from helming position.

## NEW RUDDER DESIGN

More than 200 design hours were invested in a new rudder design that produces better grip in the water and reduces drag, allows higher speeds and provides more comfort. Altogether, a remarkable improvement in the overall stability and performance of the new model.



## THE SALOON

The saloon features a newly designed table with integrated bottle storage and a lower, deeper sofa for maximum comfort, making it an ideal space for relaxation and socializing. Storage access has been simplified with hinged cushions and locker lids, adding to the practicality of the interior design.



## THE GALLEY

The galley comes as standard with large double pull-out bins, full pull-out drawers, top loaded fridge with gas strut, double sink, space for additional front-loaded fridge, 3 burner gimballed oven, space for optional Nespresso coffee machine, space for optional microwave oven and plenty of storage space.



## SPACIOUS LIVING

As you step below deck, you will notice the spacious entrance with curved laminated raw teak steps to prevent slipping, accentuated by ambient lighting and elegant laminated oak handrails, contribute to the refined aesthetic.

## INCREASED PORTLIGHT

The X4<sup>9</sup> MkII comes with a collection of sophisticated interior features designed to enhance comfort and functionality for those who value luxury sailing. The larger hull windows introduce 50% more natural light into the cabins, creating a bright and inviting atmosphere below deck. Improved portlight opening sizes ensure superior ventilation throughout the cabins, maintaining a fresh environment.



## OWNER'S CABIN

The large owner's berth includes easily accessible storage, while the redesigned heads compartment enhances convenience and better visual appearance. Furthermore, the aft cabins provide generous space with options for a double berth or split single cabins, ensuring versatile accommodations to suit various needs.

## NAV STATION

The forward-facing chart table version has space for an optional chart plotter and additional communication and sailing instruments behind the top hinged doors.

The X4<sup>9</sup> MkII is also offered in an aft-facing chart table version, which includes a separate shower adjacent to the aft head compartment.



## LAYOUT OPTIONS

The X4<sup>9</sup> welcomes you with lots of new ideas. There are a number of layout options available, all beautifully presented in a modern and internationally recognisable Danish style and quality. The port aft cabin, slightly larger than the starboard aft cabin is offered as standard with a large double berth. It is also available with two twin berths, with the ability of converting into a large double berth using a cushion which fits in the space between.

There is an option for an additional shower in the aft head when the backwards-facing chart table is chosen.



OPTIONAL LAYOUT 1



OPTIONAL LAYOUT 2



Configure your own  
X4<sup>9</sup> MkII now

# X4<sup>9</sup> MK II



## X4<sup>9</sup> MkII DIMENSIONS

LOA incl optional bowsprit	15,348 m	50'4"
Hull Length	14,65 m	48'1"
LWL	13,58 m	47'7"
Beam	4,49 m	14'73"
Shallow draft	2,00 m	6'7"
Standard draft	2,40 m	7'20"
Deep draft (T-keel)	2,70 m	8'9"
Ballast (standard)	5,480 kg	12,015 lbs
Displacement (light)	12,900 kg	28,439 lbs

## ENGINE/TANKS

Engine diesel	425 kW	58 hp
Fuel tank	265 Ltr	70 Gal (US)
Water tank	310 Ltr	82 Gal (US)

## SAIL AREAS

Mainsail area	73,0 m <sup>2</sup>	786 ft <sup>2</sup>
98% (LP) Self-tacking Genoa area	45,0 m <sup>2</sup>	484 ft <sup>2</sup>
106% (LP) Optional Genoa area	55,0 m <sup>2</sup>	592 ft <sup>2</sup>
Asymmetrical Spinnaker area	216 m <sup>2</sup>	2325 ft <sup>2</sup>





# THE HIDDEN X-YACHTS QUALITIES

Our competitors claim we care too much about things yacht owners don't see, and yes, we do care - and so do X-Yachts owners. We call it The X-Yachts Qualities.

Every sailing vessel has hidden features, and here are a few you don't normally see. They are central features, making X-Yachts the premium brand it is. When your eyes fall upon an X-Yachts, you will probably feel good about what you see. Especially if the boat is yours. One of the most profound pleasures of owning a yacht is looking at it and enjoying its beauty.

The same goes for the sailing performance: An X-Yacht moves faster, smoother and with less heeling than most other boats, and you don't have to be an expert to experience it. And you don't necessarily have to know much about how it was achieved. But it's well known that we don't build the cheapest boats on the market. And we would like to tell you, that a lot of the extra value is hidden in upgraded materials, advanced building techniques and special features, that are unique for an X-Yacht. So, if you're curious – here's a few of the elements that make our boats stand out the way they do.







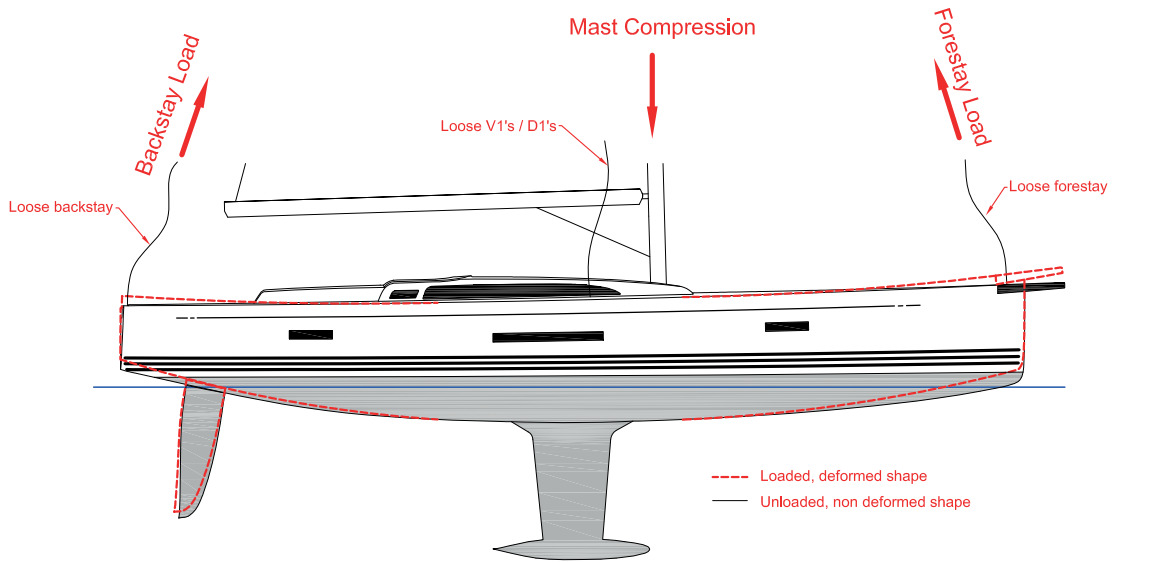
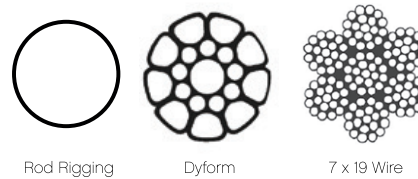
The mast has uncontrolled deflection due to lack of leeward rig tension.

This is called forestay pumping, and deforms the foresail in a critical moment, which affects performance negatively. An X-Yacht is a precisely engineered structure with enhanced hull stiffness. Forces from wind and water are absorbed by ocean proof, solidly dimensioned parts, all the way from the bottom of the keel to the top of the mast, and from the bow to the transom. This stiffness prevents forestay pumping, and ensures that even minor tuning adjustments of sails or rig are precisely translated to the change you aim for. Being able to adapt easily to changing conditions makes the boat perform well, and makes the boat a safer and more enjoyable place to be.

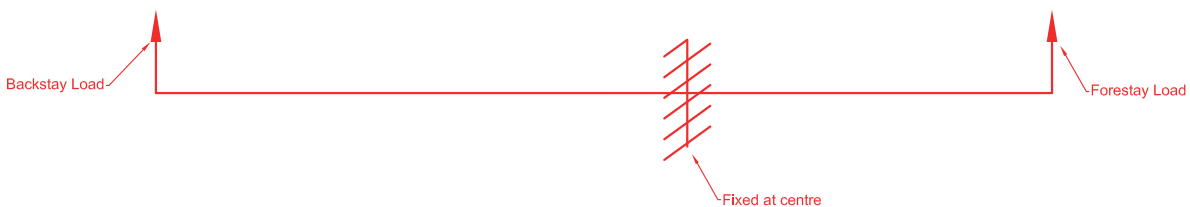
Every X-Yacht is delivered with rod rigging, and chainplates are integrated in a way that distributes and absorbs forces evenly through the hull. When an X-Yacht hits a wave, nothing gives in.

## STIFFNESS AND RIG TENSION

On any yacht, the forestay and backstay will pull the hull upwards, while the mast will push it downwards. If the hull isn't stiff enough, the boat will flex – especially when sailing upwind in waves. This can cause the forestay to lose tension momentarily every time the boat hits a wave.



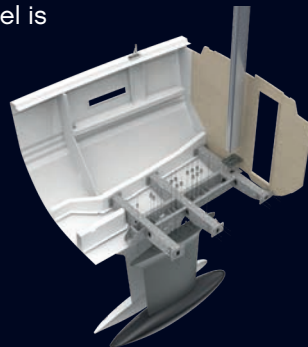
Idealized Loading condition diagram





## STEEL FRAME

The galvanized steel frame is probably our most famous signature feature. It has been a core principle in the construction of an X-Yacht since 1981. In some models, the steel frame has been replaced by a carbon fiber version, to save weight – but the function remains the same: To provide a safe and strong attachment between the keel and the hull. The steel frame makes it possible to use heavier keels, an important part of the inherent stability that X-Yachts are so famous for. The keel is bolted directly to the steel frame, and any force working on the keel – even sudden shocks from grounding or hitting debris in the water – will be absorbed and distributed evenly throughout the structure.



## STABILITY/WEIGHT DISTRIBUTION

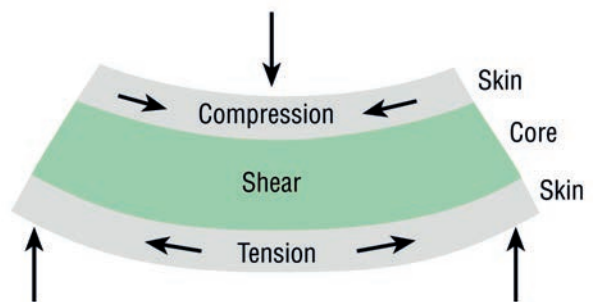
(VERTICAL AND LONGITUDINAL)

X-Yachts has always prioritized high stability through providing a low center of gravity. The keel is heavy, and the weight distribution in the boat is centered way down, near the water line. But longitudinal weight distribution is also hugely important in a sailing yacht. Excessive weight in the stern and transom will cause pitching and slamming. This is not only uncomfortable, but also transmits massive loads through the boat and slows it down. X-Yachts has tanks and other heavy items mounted as close to midships as possible. Moving mass close to the centre of gravity reduces inertia, and increases speed and comfort when going through waves.



## VACUUM INFUSED EPOXY SANDWICH

Vacuum infusion is a building process where dry fibres are placed in the hull mould, and covered in an airtight plastic membrane. Vacuum is applied, and resin added through tubes into the laminate. This process makes it possible to control the amount and distribution of resin very precisely in all areas and provide a uniform, strong hull with an approximate 15% weight reduction. We use Gurit Corecell M foam between the two layers of laminate, a sandwich material with excellent impact resistance, high strength and low resin uptake. This build process provides a very light, stiff and strong hull.





## TRANSPARENT BOTTOM LAMINATE/GELCOAT QUALITY

The strength and integrity of a composite structure relies on a complete saturation of the fibres. Resin (polyester or epoxy) has to be distributed and immersed completely throughout the whole fibre laminate, without dry spots or air bubbles. To make it easier to detect potential flaws during production, X-Yachts applies clear gelcoat on the bottom section of every hull. We use high grade gelcoat and epoxy treatment to prevent water ingress.



## CENTER LIFT

X-Yachts are designed to be lifted using a single lift point integrated in the steel frame. This means that you can avoid using straps at the crane, thereby eliminating the risk of damage to propellers and rudders. Also, there will be no scratching of topsides or removing freshly painted antifouling. The single lift point simply makes things easier when lifting or launching the boat – and it proves just how strong and well balanced the yacht really is.



## ENCAPSULATED KEEL

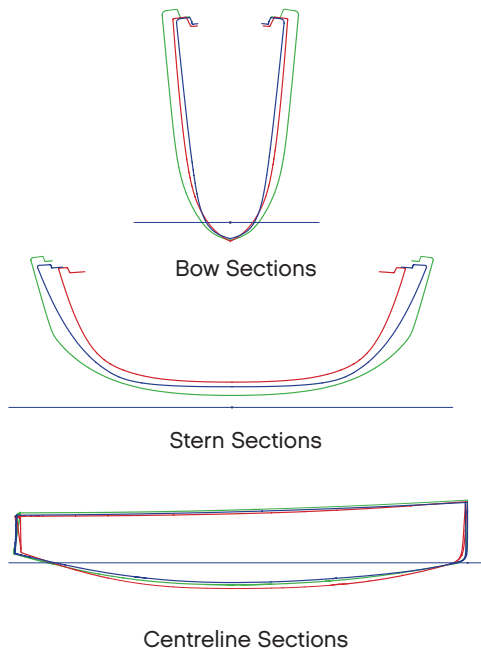
X-Yachts' cast iron and lead keels are encapsulated in a reinforced epoxy e-glass shell, to guarantee a hydrodynamic and fair finish. The shell also protects the keel from corrosion. We use female moulded shells to make sure every keel stays accurate and faithful to the designed, original profile.



## LEAD KEEL BULBS

Lead keel bulbs have a smaller volume than iron bulbs of the same weight. The use of lead in our bulbs means a 30% reduction of volume. Less wetted surface means less resistance and more speed.





## DESIGN, HULL LINES

A well-designed hull defines a yacht that sails fast and provides a comfortable base for the crew in all conditions and on all points of wind. Our design office has a more than 40 year long track record designing yachts that are known all over the world for their efficient lines and fast hulls. We have always taken pride in doing our design work in house, and continue to do so today.

- Pure X
- Xc
- Xp

## COMPONENT MATERIAL QUALITY

The loads in an X-Yacht are considerable – even more so because of the large sail plan. We build a strong hull and keel structure, but the rigging components handling the loads also have to be top of the line – and dimensioned correctly. We only use the best suppliers: Andersen, Harken, Reckman, Ronstan and Spinlock provide reliable rig components that are easy to use and maintain, and correctly sized for the loads involved. Lower-specification items of lesser quality or strength would be cheaper, but would compromise the high safety and easy handling of an X-Yacht.



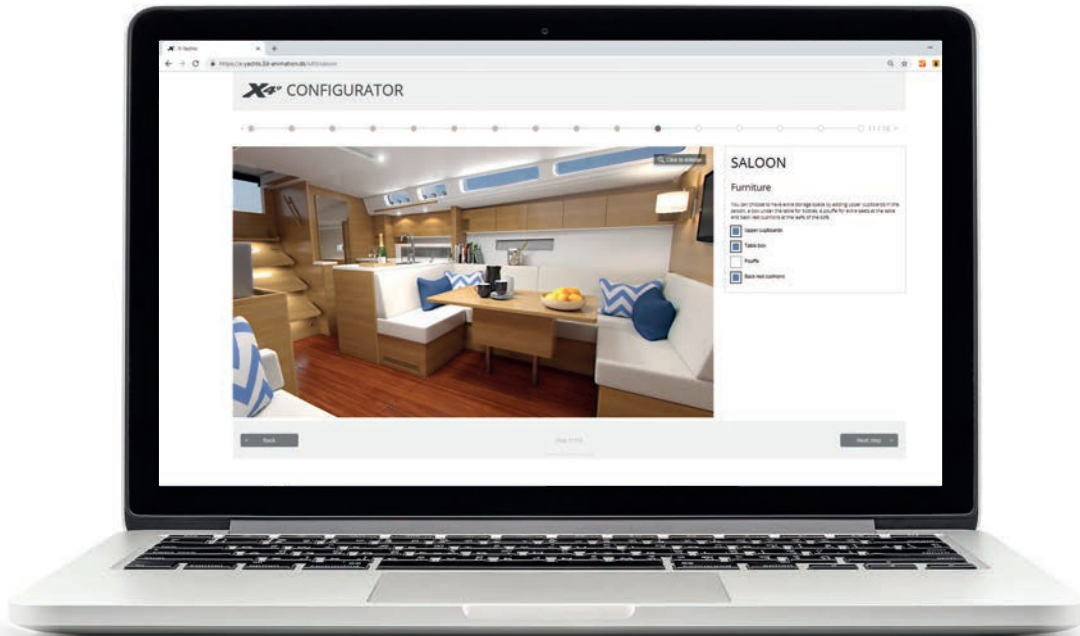
## ERGONOMICS, COCKPIT, EASY HANDLING

Behind the natural, free flowing experience of easy sail handling in a cockpit lies an extensive attention to detail, when it comes to ergonomics and work positions. Creating a cockpit that works equally well for an active racing crew and for relaxed family cruising is no small task. X-Yachts are well known for easy handling, and our racing heritage means that we know where every little thing needs to sit to make things work as effortlessly as possible.





# CONFIGURE YOUR DREAM TODAY



## DESIGN YOUR DREAM BOAT... ON OUR WEBSITE X-YACHTS.COM

You can easily create a beautiful visualization of your dream yacht at X-Yachts.com.

Many of the standard options are described here such as the colour of the hull and waterlines, hull treatment, mast, interior, cushion fabrics etc.

It is even possible to get a visualization of the boat with its own name and port.

The configurator is intuitive and fun to use - so go ahead, play and dream.



Scan QR code

# *X-Yachts*<sup>®</sup>

WORLD CLASS SINCE 1979



ARGENTINA, AUSTRALIA, AUSTRIA, BRAZIL, BELGIUM, BOSNIA HERZEGOVINA, BULGARIA, CANADA, CHILE,  
CHINA, CROATIA, CYPRUS, DENMARK, DUBAI (UAE), FINLAND, FRANCE, GERMANY, GREAT BRITAIN,  
GREECE, HOLLAND, HONG KONG, HUNGARY, IRELAND, ISRAEL, ITALY, JAPAN, LATVIA, LITHUANIA,  
MACEDONIA, MALTA, MONTENEGRO, NEW ZEALAND, NORWAY, PERU, PORTUGAL, POLAND, ROMANIA,  
SERBIA, SLOVENIA, SPAIN, SWEDEN, SWITZERLAND, TAIWAN, TURKEY, UKRAINE, USA

X-YACHTS.COM



**X-YACHTS PROUDLY PRESENT  
THE OFFICIAL PARTNERS**

- NORTH SAILS
- PANTAENIUS
- AXXON COMPOSITES
- ELVSTRØM SAILS
- GARMIN
- HEMPEL
- PROFURL
- RAYMARINE
- SPINLOCK
- B&G
- WICHARD
- LIROS
- FURLERBOOM
- RONSTAN
- ANDERSEN WINCHES
- FLEXITEEK
- JOHN MAST
- HARKEN
- FISCHER PANDA
- X-YACHTING GREECE

